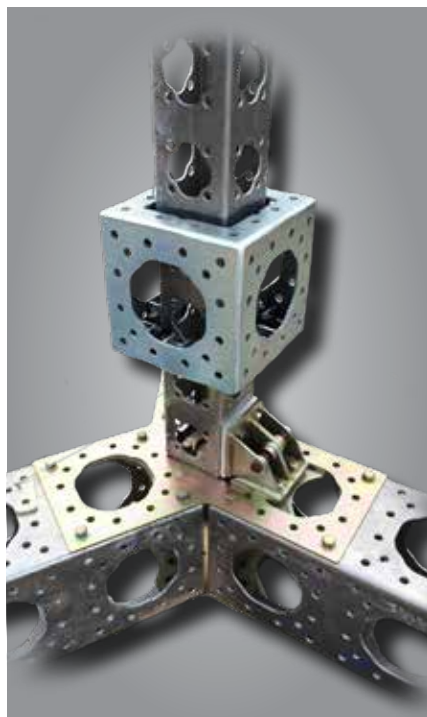
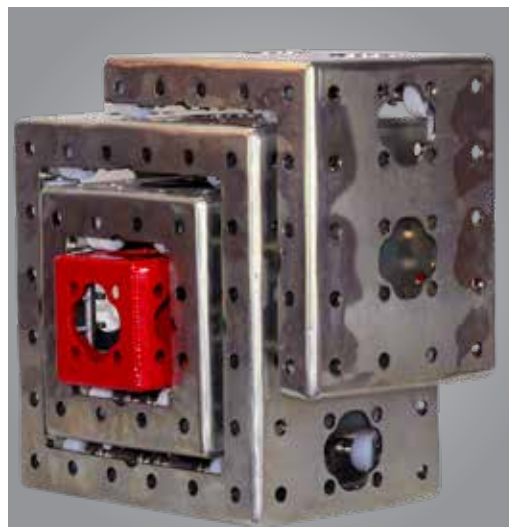
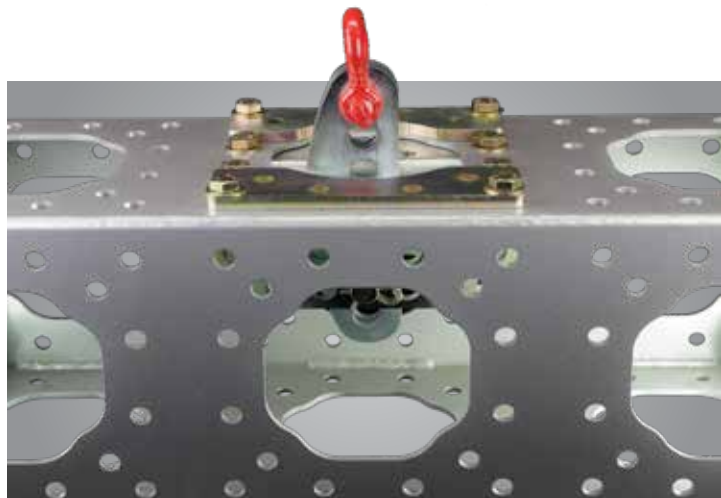


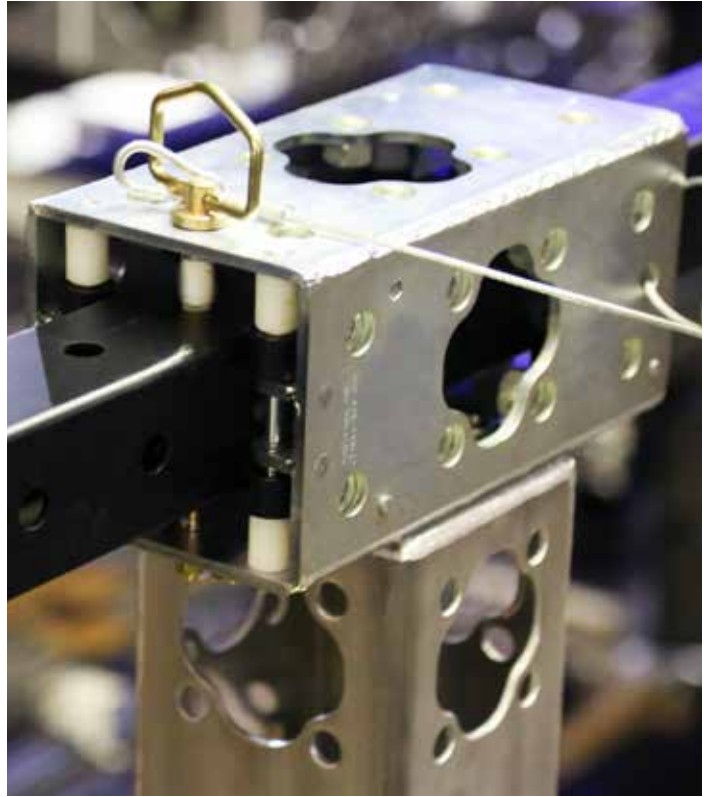
MR | MOTION & RIGGING



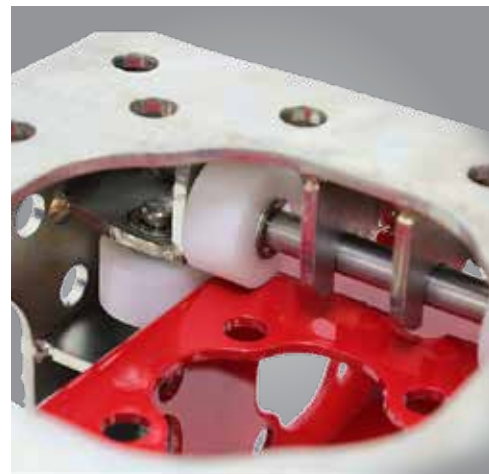
MR



MR



MOTION & RIGGING



Universal Mount Half 12" x 6"

Part Number | MT-MR-UM-A-12-06-14-01



Standard Material	A36 Low Carbon Steel
Standard Finish	10 - Zinc Clear
Available Finish(es)	10-12, 20-33
Size	4.38" x 10.5" x 0.5" (111.25mm x 266.70mm x 12.70mm)
Weight	11.60lbs (5.26kg)
Hole Size	11/16" (17.46mm) and 1.03" - Fits 1.0" Pin (26.16mm Fits 25.40mm Pin)
Recommended Hardware	5/8"-11 Thread Grade 8 Bolt, 2" Long 5/8" SAE Zinc-Plated Washer 5/8"-11 Thread, Grade 8 Hex Nut (M16 x 2 Thread, 50mm Long, Class 10.9 Bolt M16, Class 10.9 Washer M16 x 2 Thread, Class 10.9 Nut)
Recommended Tools	Tool Kit 1
For More Info	www.ModTruss.com



Electrical Hazard



Flammability



In Stock



Made To Order



Customizable



Reusable



Compatible



Serialized & Traceable

TR

EX

PL

JH

PA

HG

MR

AC

HW

TK

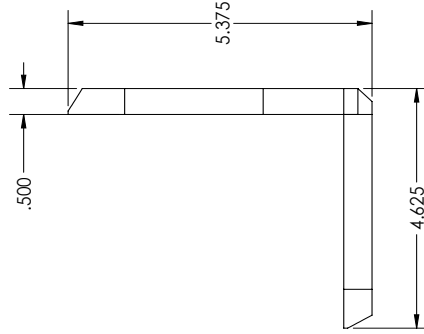
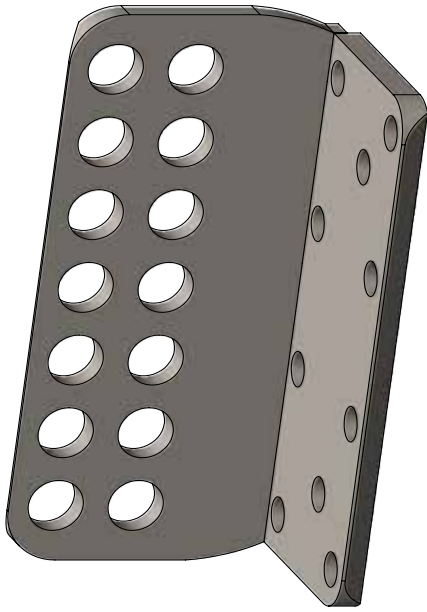
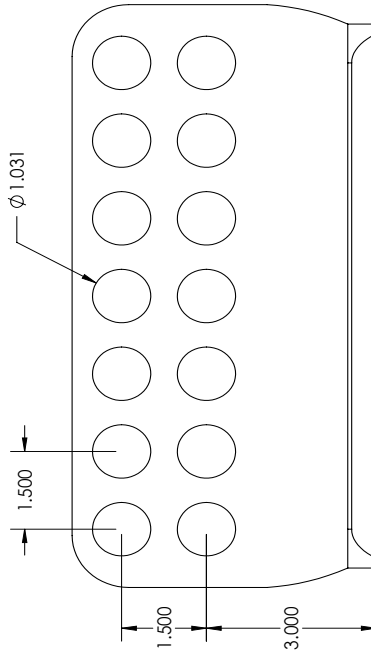
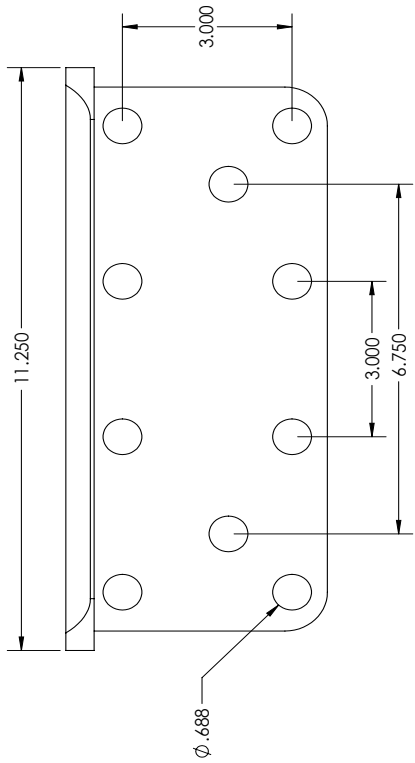
MH

FH

GL

Series | **MR** Motion & Rigging

Product Number | MT-MR-UM-A-12-06-14-01



	PRECISION LEVEL: MED-4.0, (1.59) BRACKET (DIMENSIONS ARE IN MM)
	8/24/2017
REVISION: NR	
DESCRIPTION: UNIVERSAL MOUNT ANGLE 12"x6"	
PART NUMBER: MT-MR-UM-A-12-06-14-01	

Universal Mount Biscuit - 7 Hole

Part Number | MT-MR-UM-B-07-01



Standard Material	A36 Low Carbon Steel
Standard Finish	10 - Zinc Clear
Available Finish(es)	10-12, 20-33
Size	3.38" x 11.5" x 0.5" (185.85mm x 292.10mm x 12.70mm)
Weight	3.75lbs (1.70kg)
Hole Size	1" (25.40mm)
Recommended Tools	Tool Kit 1
For More Info	www.ModTruss.com



Electrical Hazard



Flammability



In Stock



Made To Order



Customizable



Reusable



Compatible



Serialized & Traceable

TR

EX

PL

JH

PA

HG

MR

AC

HW

TK

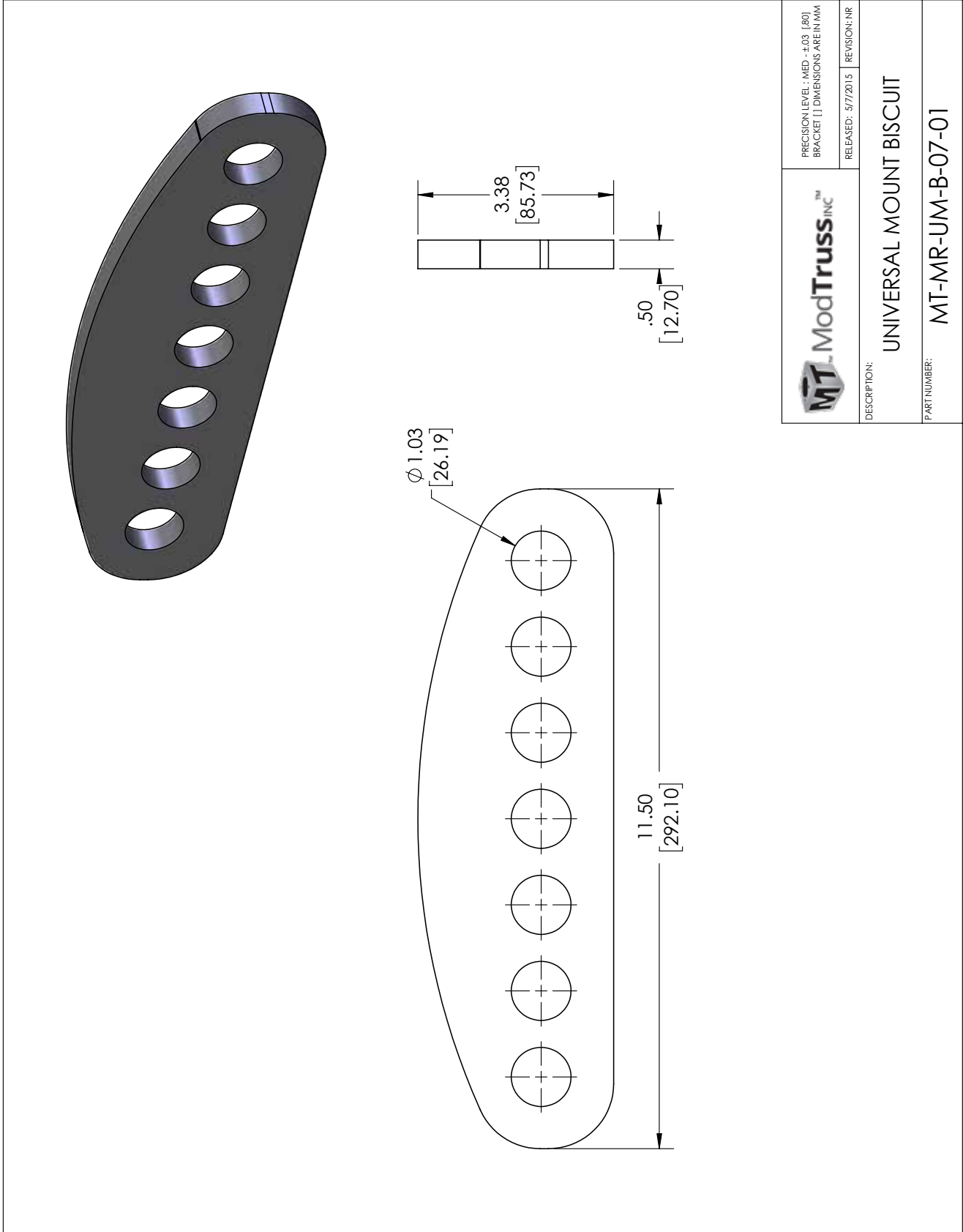
MH

FH

GL

Series | **MR** Motion & Rigging

Product Number | MT-MR-UM-B-07-01



	PRECISION LEVEL: MED. +0.03 [-0.03]
	BRACKET [] DIMENSIONS ARE IN MM
DESCRIPTION: UNIVERSAL MOUNT BISCUIT	RELEASED: 5/7/2015 REVISION: NR
PART NUMBER: MT-MR-UM-B-07-01	

Universal Mount Assembly

Part Number | MT-MR-UM-A-12-06-14-01-AS

Components Included

Qty. 2 - MT-MR-UM-A-12-06-14-01

Qty. 2 - MT-MR-UM-B-07-01

Qty. 2 - MT-HW-P-AS-0300-0100-0106

Qty. 4 - MT-HW-P-CP-0448-0012-0110



Standard Material	A36 Low Carbon Steel
Standard Finish	10 - Zinc Clear Pin 11 - Zinc Gold/Yellow
Available Finish(es)	N/A
Size	N/A - Components are multi-configurable
Weight	32.30lbs (14.65kg)
Hole Size	11/16" (17.46mm) 1.03" - Fits 1.0" Pin (26.162mm Fits 25.4mm Pin)
Recommended Hardware	5/8"-11 Thread Grade 8 Bolt, 2.5" Long 5/8" SAE Zinc-Plated Washer 5/8"-11 Thread, Grade 8 Hex Nut (M16 x 2 Thread, 64mm Long, Class 10.9 Bolt M16, Class 10.9 Washer M16 x 2 Thread, Class 10.9 Nut)
Recommended Tools	Tool Kit 1
For More Info	www.ModTruss.com



Electrical Hazard



Flammability



In Stock



Made To Order



Customizable



Reusable



Compatible



Serialized & Traceable

TR

EX

PL

JH

PA

HG

MR

AC

HW

TK

MH

FH

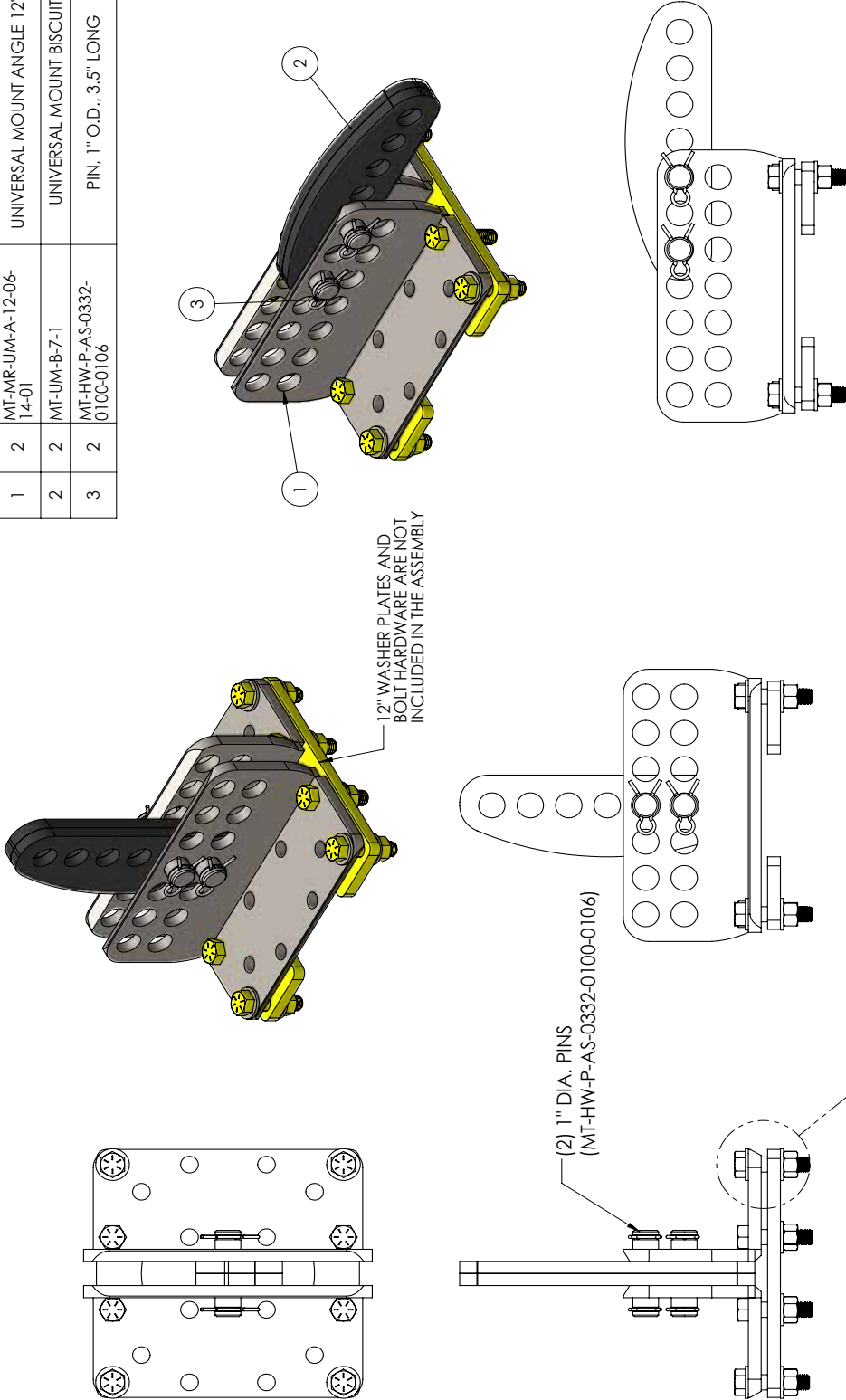
GL

Series | MR Motion & Rigging

Product Number | MT-MR-UM-A-12-06-14-01-AS



ITEM NO.	QTY	PART NUMBER	DESCRIPTION
1	2	MT-MR-UM-A-12-06-14-01	UNIVERSAL MOUNT ANGLE 12"x6"
2	2	MT-UM-B-7-1	UNIVERSAL MOUNT BISCUIT
3	2	MT-HW-P-AS-0332-0100-0106	PIN, 1" O.D., 3.5" LONG



	PRECISION DEL. NUTS - 40% (1.5%) BRACKET DIMENSIONS ARE IN INCH
	8/29/2017
REVISION: NR UNIVERSAL MOUNT ASSEMBLY	
PART NUMBER MT-MR-UM-A-12-06-14-01-AS	

Universal Mount 2-Hole 90°

Part Number | MT-MR-UM-0250-0250-090



Standard Material	A36 Low Carbon Steel
Standard Finish	03 - Tumbled & De-burred
Available Finish(es)	N/A
Size	2.5" x 2.5" x .25 (63.50mm x 63.50mm x 6.35m)
Weight	0.2lbs (0.09kg)
Hole Size	11/16" (17.46mm)
Recommended Hardware	5/8"-11 Thread Grade 8 Bolt, 2" Long 5/8" SAE Zinc-Plated Washer 5/8"-11 Thread, Grade 8 Hex Nut (M16 x 2 Thread, 50mm Long, Class 10.9 Bolt M16, Class 10.9 Washer M16 x 2 Thread, Class 10.9 Nut)
Recommended Tools	Tool Kit 1
For More Info	www.ModTruss.com



Electrical Hazard



Flammability



In Stock



Made To Order



Customizable



Reusable



Compatible



Serialized & Traceable

TR

EX

PL

JH

PA

HG

MR

AC

HW

TK

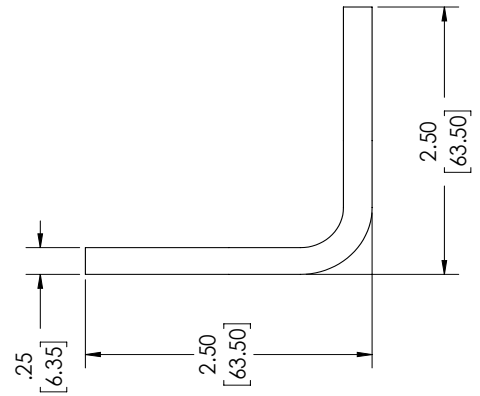
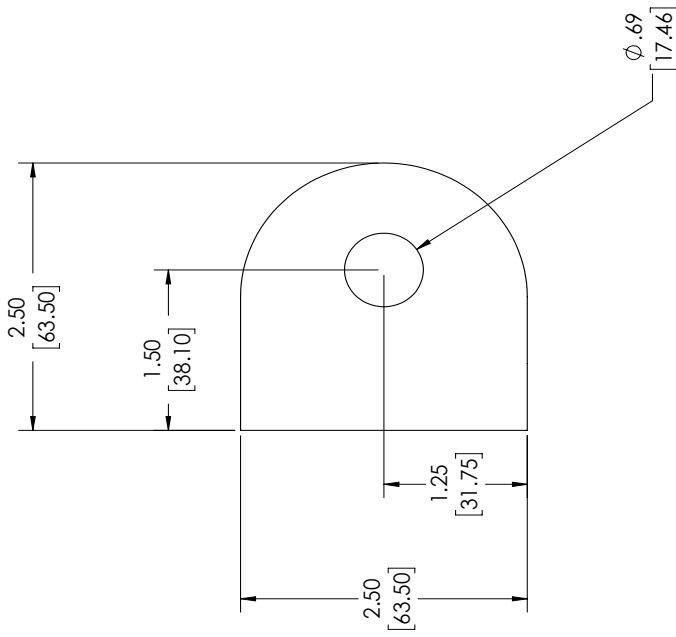
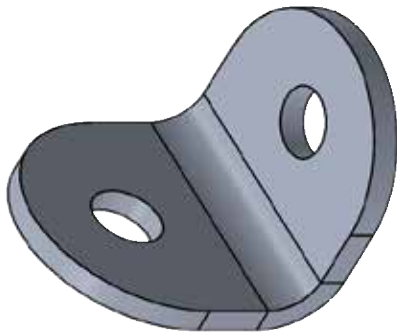
MH

FH

GL

Series | **MR** Motion & Rigging

Product Number | MT-MR-UM-0250-0250-090

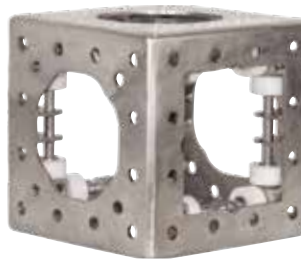


	PRECISION LEVEL: MED. +0.04 (L BR) BRACKET (I) DIMENSIONS ARE IN MM	REVISION: VI
	9/12/2018	
DESCRIPTION: 2 HOLE UNIVERSAL MOUNT		
PART NUMBER: MT-MR-UM-0250-0250-090		

Sleeve Blocks



MT-MR-SL-18-18-12
Fits 12" x 12" TR



MT-MR-SL-12-12-12
Fits 6" x 6" TR



MT-MR-SL-06-06-12
Fits 3" x 3" TR



MT-MR-SL-18-12-12
Fits 6" x 12" TR

Standard Material	A36 Low Carbon Steel and Nylon
Standard Finish	10 - Zinc Clear
Available Finish(es)	10-12, 20-33
Hole Size	5/8"-11 Steel Weld Nut (No thru holes)
Recommended Hardware	5/8"-11 Thread Grade 8 Bolt, 2" Long 5/8" SAE Zinc-Plated Washer 5/8"-11 Thread, Grade 8 Hex Nut
Recommended Tools	Tool Kit 1
For More Info	www.ModTruss.com

Part # Description	Size <i>Metric version made to order</i>	Weight
MT-MR-SL-18-18-12 <i>18" Sleeve Block</i>	18" x 18" x 12" (457.20mm x 457.20mm x 304.80mm) - Fits 12" x 12" TR	83.00lbs (37.65kg)
MT-MR-SL-18-12-12* <i>18" x 12" Sleeve Block</i>	18" x 12" x 12" (457.20mm x 457.20mm x 304.80mm) - Fits 6" x 12" EX	76.35lbs (34.63kg)
MT-MR-SL-12-12-12* <i>12" Sleeve Block</i>	12" x 12" x 12" (457.20mm x 457.20mm x 457.20mm) - Fits 6" x 6" TR	59.10lbs (26.81kg)
MT-MR-SL-06-06-12 <i>6" Sleeve Block</i>	6" x 6" x 12" (152.400mm x 152.40mm x 304.80mm) - Fits 3" x 3" TR & EX	19.30lbs (8.75kg)



Electrical Hazard



Flammability



In Stock



Made To Order



Customizable



Reusable



Compatible*



Serialized & Traceable

*Compatible with standard Truss

TR

EX

PL

JH

PA

HG

MR

AC

HW

TK

MH

FH

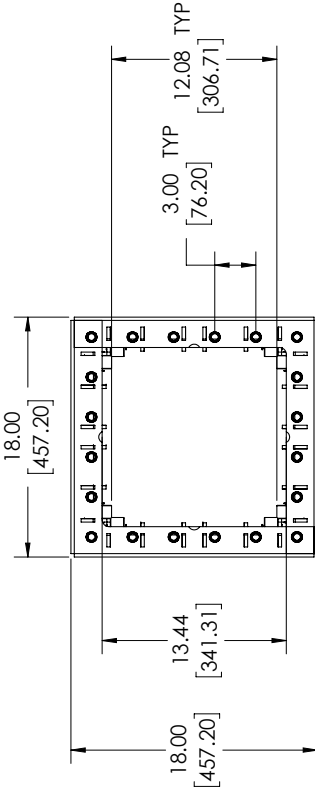
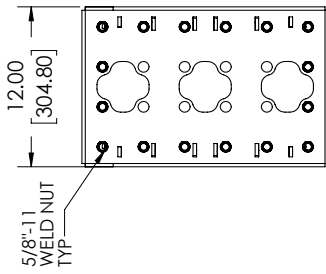
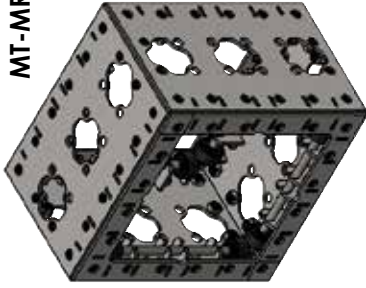
GL

Series | **MR** Motion & Rigging

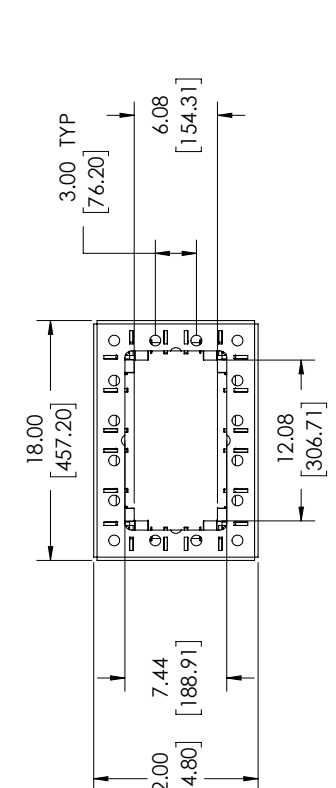
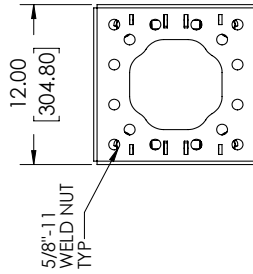
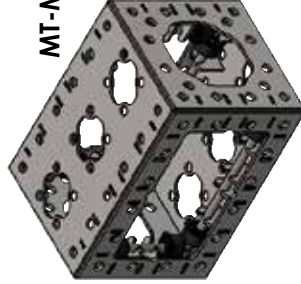
Product Number | MT-MR-SL-XX-XX-XX



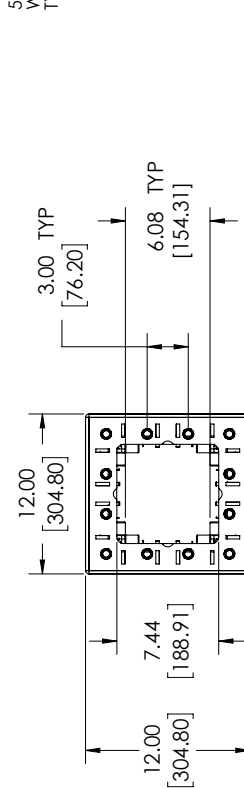
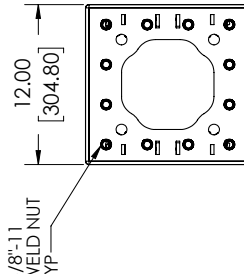
MT-MR-SL-18-18-12



MT-MR-SL-18-12-12

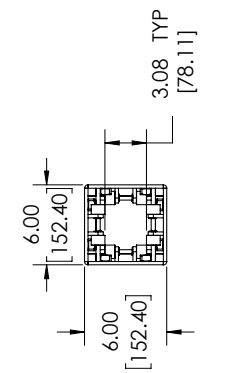
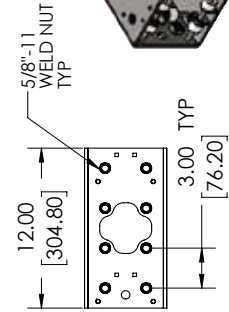
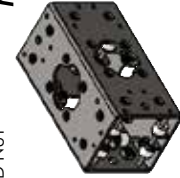


MT-MR-SL-12-12-12



	PRECISION LEVEL - MED +0/-0.1 [LSI] BRACKET DIMENSIONS ARE IN MM	9/18/2018	REVISION: VI
	DESCRIPTION:	SLEEVE BLOCKS	
PART NUMBER:		MT-MR-SL-XX-XX-XX	

MT-MR-SL-06-06-12



Corner Sleeve Block 15"

Part Number | MT-MR-SL-15-15-12-12

15" x 15" x 12" Corner Sleeve Block - Fits 12" x 12" Truss
Metric version made to order



Standard Material	A36 Low Carbon Steel and Nylon
Standard Finish	10 - Zinc Clear
Available Finish(es)	10-12, 20-33
Size	15" x 15" x 12" (381.0mm x 381.0mm x 304.80mm)
Weight	45.79lbs (20.76kg)* *Not certified
Hole Size	5/8"-11 Steel Weld Nut
Recommended Hardware	5/8"-11 Thread Grade 8 Bolt, 2" Long 5/8" SAE Zinc-Plated Washer 5/8"-11 Thread, Grade 8 Hex Nut
Recommended Tools	Tool Kit 1
For More Info	www.ModTruss.com



Electrical Hazard



Flammability



In Stock



Made To Order



Customizable



Reusable



Compatible



Serialized & Traceable

TR

EX

PL

JH

PA

HG

MR

AC

HW

TK

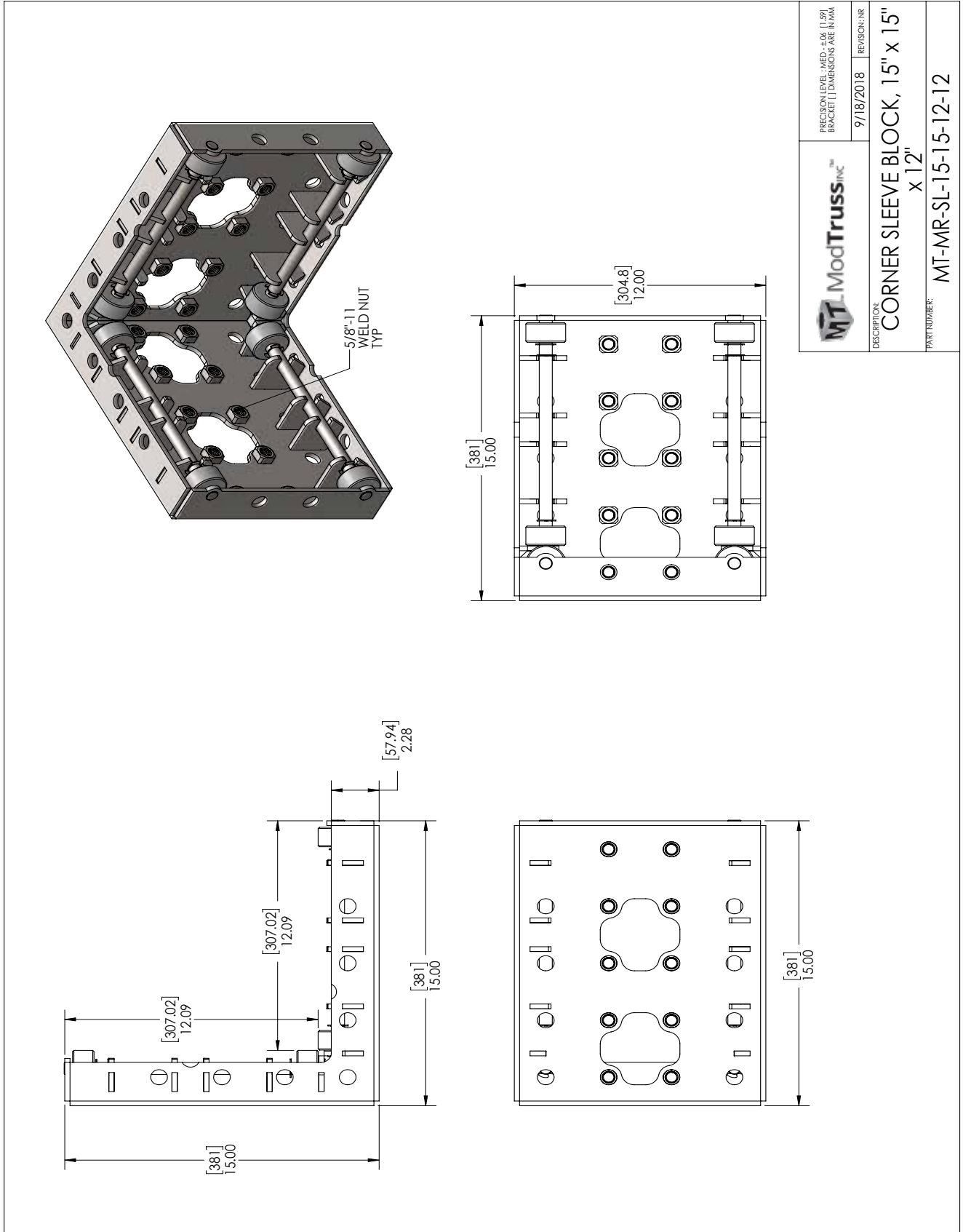
MH

FH

GL

Series | **MR** Motion & Rigging

Product Number | MT-MR-SL-15-15-12-12



Telescopic Tubes (Tube Only)



Bushing Block

Part Number | MT-MR-TT-BB-1016-0500-0132



Standard Material	UHMW (Ultra High Molecular Weight Polyethylene)
Standard Finish	02 - No Finish
Available Finish(es)	N/A
Size	5" x 1.5" x 10.25" (127.0mm x 38.10mm x 260.35mm)
Weight	2.40lbs (1.09kg)
Hole Size	11/16" (17.46mm)
Recommended Hardware	5/8"-11 Thread Grade 8 Bolt, 4" Long 5/8" SAE Zinc-Plated Washer 5/8"-11 Thread, Grade 8 Hex Nut M16 x 2 Thread, 101.6mm Long, Class 10.9 Bolt M16, Class 10.9 Washer M16 x 2 Thread, Class 10.9 Nut
Recommended Tools	Tool Kit 1
For More Info	www.ModTruss.com



Standard Material	A36 Low Carbon Steel
Standard Finish	10 - Zinc Clear
Available Finish(es)	10-12, 20-33
Hole Size	11/16" (17.46mm) 1.03" (26.19mm) 2.25 (57.15mm)
Recommended Hardware	5/8"-11 Thread Grade 8 Bolt, 2.5" Long 5/8" SAE Zinc-Plated Washer 5/8"-11 Thread, Grade 8 Hex Nut (M16 x 2 Thread, 64mm Long, Class 10.9 Bolt M16, Class 10.9 Washer M16 x 2 Thread, Class 10.9 Nut)
Recommended Tools	Tool Kit 1
For More Info	www.ModTruss.com

Part # Description	Size	Weight
MT-MR-TT-TT-1200-1200-4800 <i>48" Telescopic Tube (Tube Only)</i>	11.5" x 11.5" x 48" (292.10mm x 292.10mm x 1219.20mm)	32.42lbs (14.70kg)* Not Certified
MT-MR-TT-TT-1200-1200-7200 <i>72" Telescopic Tube (Tube Only)</i>	11.5" x 11.5" x 72" (292.10mm x 292.10mm x 1828.80mm)	45.22lbs (20.51kg)* Not Certified



TR

EX

PL

JH

PA

HG

MR

AC

HW

TK

MH

FH

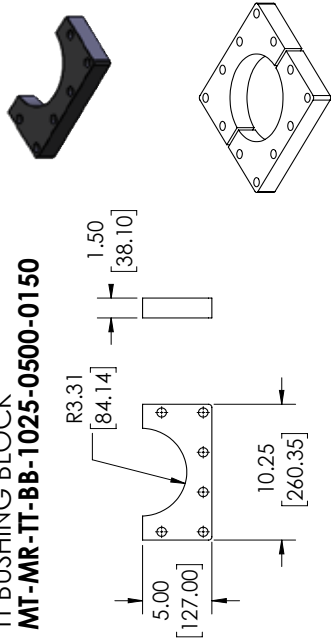
GL

Series | **MR** Motion & Rigging

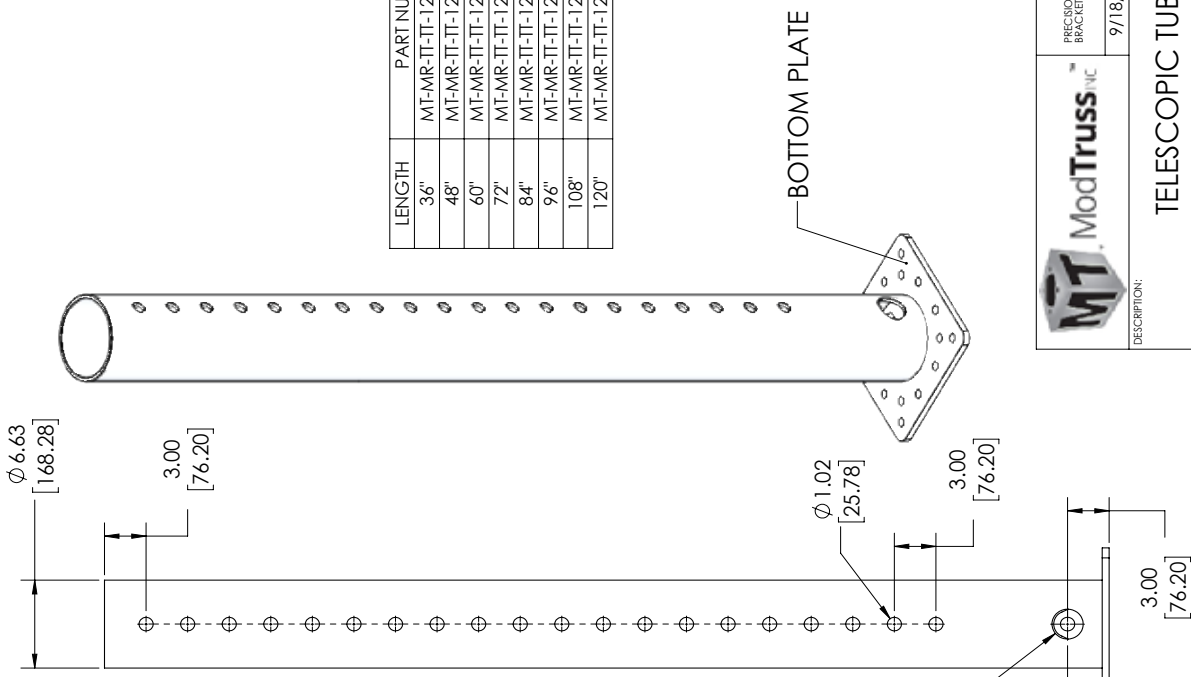
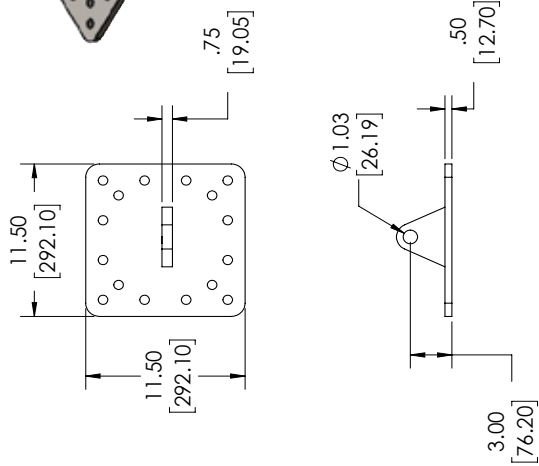
Product Number | MT-MR-TT-TT-1200-1200-XXXX



TT BUSHING BLOCK
MT-MR-TT-BB-1025-0500-0150



BOTTOM PLATE (DETAIL)



BOTTOM PLATE

LENGTH	PART NUMBER
36"	MT-MR-TT-TT-1200-1200-036
48"	MT-MR-TT-TT-1200-1200-048
60"	MT-MR-TT-TT-1200-1200-060
72"	MT-MR-TT-TT-1200-1200-072
84"	MT-MR-TT-TT-1200-1200-084
96"	MT-MR-TT-TT-1200-1200-096
108"	MT-MR-TT-TT-1200-1200-108
120"	MT-MR-TT-TT-1200-1200-120

PRECISION LEVEL: MED. +0.04 (1.60) LSP
 BRACKET (1) DIMENSIONS ARE IN MM

9/18/2018 REVISION: V1

TELESCOPIC TUBE

PART NUMBER: **MT-MR-TT-TT-1200-1200-XXX**

Axle Mount Flush Halves (Pin and Sheave Not Included)



Standard Material	A36 Low Carbon Steel
Standard Finish	10 - Zinc Clear
Available Finish(es)	10-12, 20-33
Recommended Tools	Tool Kit 1
For More Info	www.ModTruss.com

Part # Description	Size	Weight	Hole Size	Recommended Hardware
MT-MR-AX-FL-12-H* <i>12" Flush Axle Mount Half</i>	10.5" x 5.13" x 2.38" (273mm x 130mm x 60mm)	5.85lbs (2.65kg)	11/16" (17.46mm) 1" (25.40mm)	5/8"-11 Thread Grade 8 Bolt, 2.5" Long 5/8" SAE Zinc-Plated Washer 5/8"-11 Thread, Grade 8 Hex Nut (M16 x 2 Thread, 64mm Long, Class 10.9 Bolt M16, Class 10.9 Washer M16 x 2 Thread, Class 10.9 Nut)
MT-MR-AX-FL-06-H <i>6" Flush Axle Mount Half</i>	6.5" x 6" x 2.5" (165.10mm x 152.40mm x 63.50mm)	0.85lbs (0.39kg)	11/16" (17.46mm) 5/8" (15.87mm)	5/8"-11 Thread Grade 8 Bolt, 2" Long 5/8" SAE Zinc-Plated Washer 5/8"-11 Thread, Grade 8 Hex Nut (M16 x 2 Thread, 50mm Long, Class 10.9 Bolt M16, Class 10.9 Washer M16 x 2 Thread, Class 10.9 Nut)



Electrical Hazard



Flammability



In Stock



Made To Order



Customizable



Reusable



Compatible*



Serialized & Traceable

*Only 12" Flush Axle Mount Half is compatible with standard Truss

TR

EX

PL

JH

PA

HG

MR

AC

HW

TK

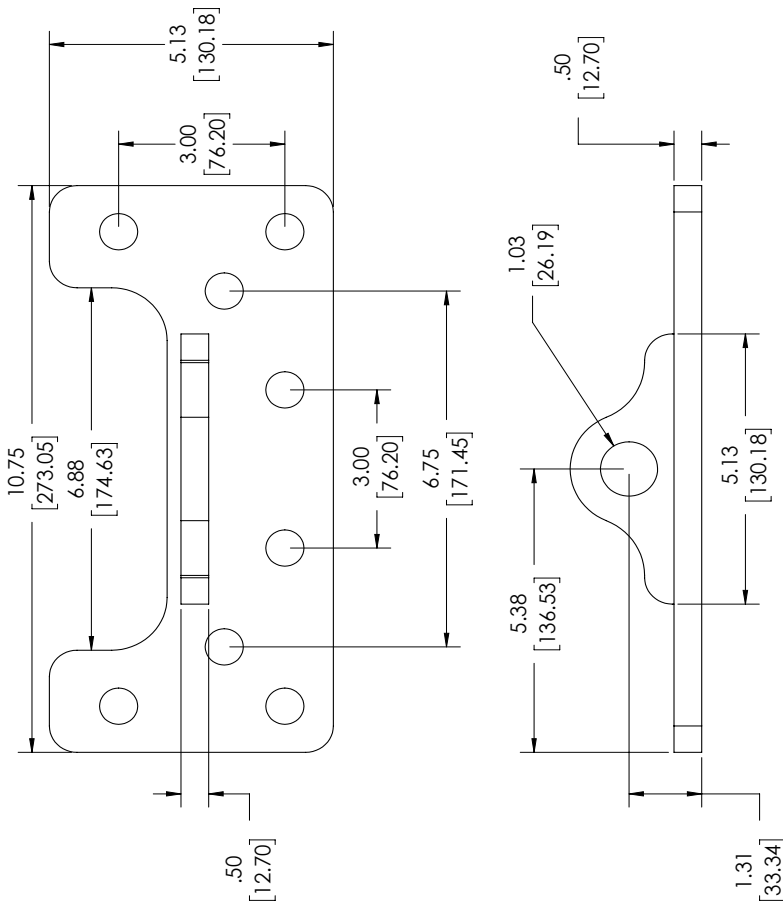
MH

FH

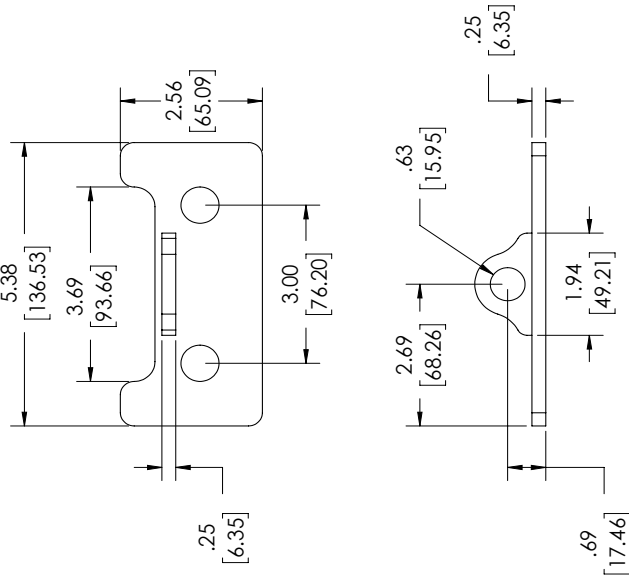
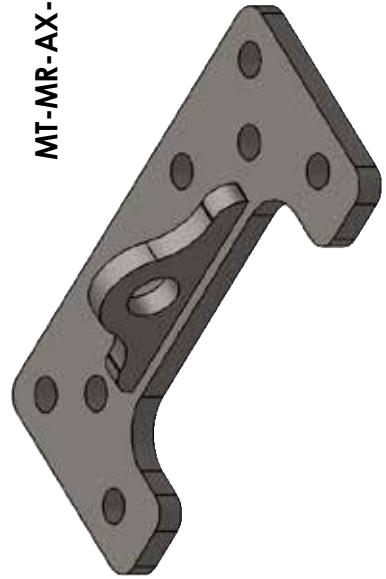
GL

Series | **MR Motion & Rigging**

Product Number | MT-MR-AX-FL-XX-H



MT-MR-AX-FL-12-H



MT-MR-AX-FL-06-H



	PRECISION LEVEL MEDIUM AXLE MOUNT HALF BRACKET (DIMENSIONS ARE IN MM)	9/10/2018	REVISION: VI
	DESCRIPTION:	AXLE MOUNT HALF	
PART NUMBER:		MT-MR-AX-FL-XX-H	

Axle Mount Flush Assemblies



MT-MR-AX-FL-12-AS



MT-MR-AX-FL-06-AS

Standard Material	A36 Low Carbon Steel
Standard Finish	10 - Zinc Clear
Available Finish(es)	10-12, 20-33
Recommended Tools	Tool Kit 1
For More Info	www.ModTruss.com

Part # Description	Size	Weight	Hole Size	Recommended Hardware
MT-MR-AX-FL-12-AS* <i>12" Flush Axle Mount Assembly</i>	10.75" x 10.75" x 2.38" (273.05mm x 273.05mm x 60mm)	13.45lbs (6.10kg)**	11/16" (17.46mm) 1" (25.40mm)	5/8"-11 Thread Grade 8 Bolt, 2.5" Long 5/8" SAE Zinc-Plated Washer 5/8"-11 Thread, Grade 8 Hex Nut (M16 x 2 Thread, 64mm Long, Class 10.9 Bolt M16, Class 10.9 Washer M16 x 2 Thread, Class 10.9 Nut)
MT-MR-AX-FL-06-AS <i>6" Flush Axle Mount Assembly</i>	5.25" x 5.38" x 1.28" (133mm x 137mm x 33mm)	1.90lbs (0.86kg)**	11/16" (17.46mm) 5/8" (15.87mm)	5/8"-11 Thread Grade 8 Bolt, 2" Long 5/8" SAE Zinc-Plated Washer 5/8"-11 Thread, Grade 8 Hex Nut (M16 x 2 Thread, 50mm Long, Class 10.9 Bolt M16, Class 10.9 Washer M16 x 2 Thread, Class 10.9 Nut)



Electrical Hazard



Flammability



In Stock



Made To Order



Customizable



Reusable



Compatible*



Serialized & Traceable

*Only 12" Flush Axle Mount Assembly is compatible with standard Truss

TR

EX

PL

JH

PA

HG

MR

AC

HW

TK

MH

FH

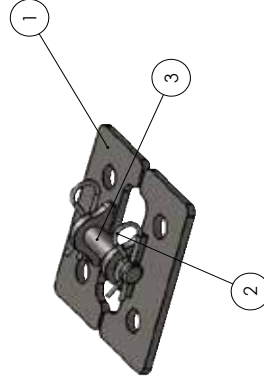
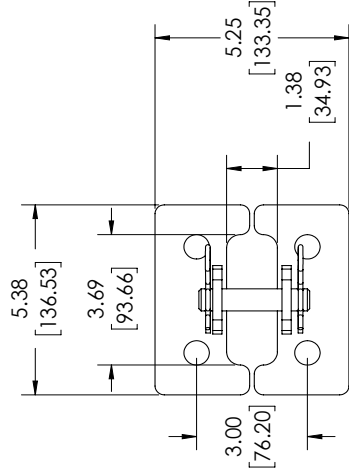
GL

Series | MR Motion & Rigging

Product Number | MT-MR-AX-FL-XXX-AS

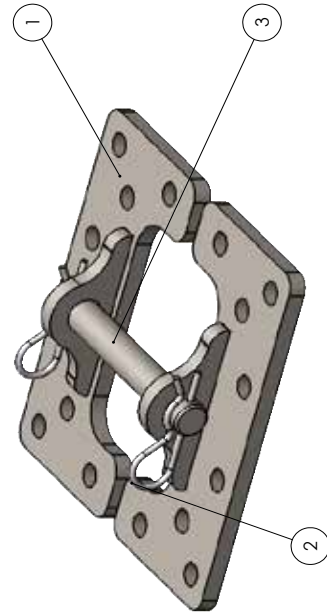
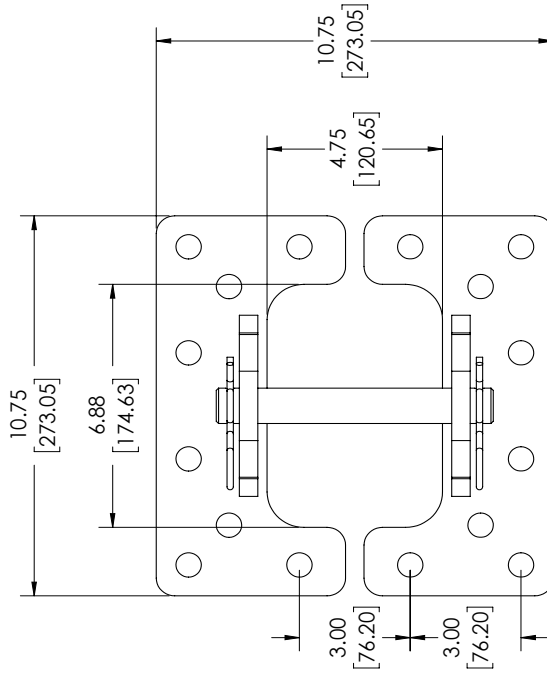
ITEM NO.	PART NUMBER	DESCRIPTION	QTY.
1	MT-MR-AX-FL-06-H	6" FLUSH MOUNT AXLE HALF	2
2	MT-HW-CP-HP-0232-0008-0010	COTTER PIN 5/8"-7/8" DIA. SHAFT	2
3	MT-HW-SH-AX-0216-0040-0010	5/8" DIAMETER AXLE PIN 2-1/4" USABLE LENGTH	1

MT-MR-AX-FL-06-AS



ITEM NO.	PART NUMBER	DESCRIPTION	QTY.
1	MT-MR-AX-FL-12-H	12" FLUSH MOUNT AXLE HALF	2
2	MT-HW-CP-HP-0350-0011-0010	COTTER PIN 7/8-1 IN DIA. SHAFT	2
3	MT-HW-SH-AX-0632-0100-0010	1" DIAMETER AXLE PIN 6-1/2" USABLE LENGTH	1

MT-MR-AX-FL-12-AS



	PRECISION LEVEL: MED - ±0.06 [1.59] BRACKET () DIMENSIONS ARE IN MM
	9/10/2018 REVISION: VI
DESCRIPTION:	AXLE MOUNT
PART NUMBER:	MT-MR-AX-FL-XX-AS

12" Head Block

Part Number | MT-MR-HB-12



Standard Material	5052-H32 Aluminum
Standard Finish	03 - Tumbled & De-burred
Available Finish(es)	10-12, 20-33
Size	17.75" x 11.75" x 8.75" (450.85mm x 298.45mm x 222.25mm)
Weight	30.60lbs (13.88kg) w/ Hardware 22.40lbs (10.16kg) w/o Hardware
Hole Size	11/16" (17.46mm)
Recommended Hardware	5/8"-11 Thread Grade 8 Bolt, 2" Long 5/8" SAE Zinc-Plated Washer 5/8"-11 Thread, Grade 8 Hex Nut (M16 x 2 Thread, 50mm Long, Class 10.9 Bolt M16, Class 10.9 Washer M16 x 2 Thread, Class 10.9 Nut)
Recommended Tools	Tool Kit 1
For More Info	www.ModTruss.com



Electrical Hazard



Flammability



In Stock



Made To Order



Customizable



Reusable



Compatible



Serialized & Traceable

TR

EX

PL

JH

PA

HG

MR

AC

HW

TK

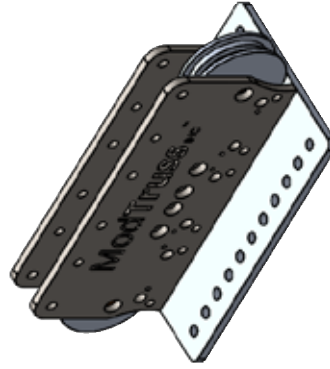
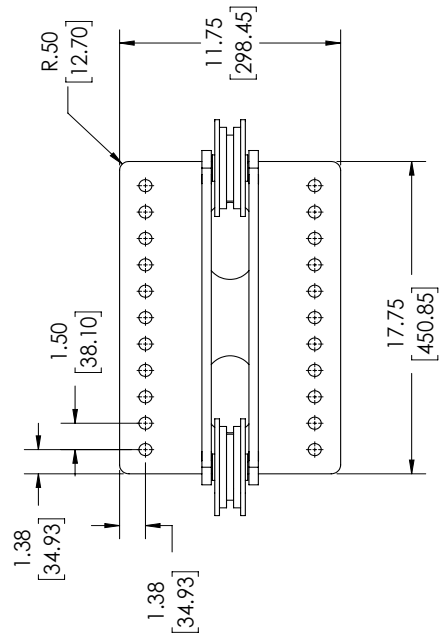
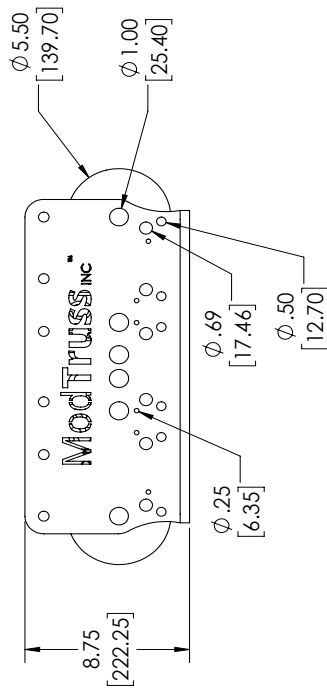
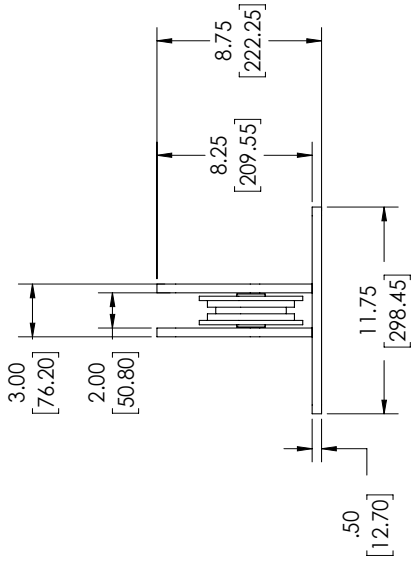
MH

FH

GL

Series | **MR** Motion & Rigging

Product Number | MT-MR-HB-12



	PRECISION LEVEL: MED - 4.06 (1.59) BRACKET (1 DIMENSIONS ARE IN MM)	REVISION: VI
	9/10/2018	REVISION: VI
DESCRIPTION: 12" HEAD BLOCK		PART NUMBER: MT-MR-HB-12

3" Head Block

Part Number | MT-MR-HB-03



TR

EX

PL

JH

PA

HG

MR

AC

HW

TK

MH

FH

GL

Standard Material	5052-H32 Aluminum
Standard Finish	03 - Tumbled & De-burred
Available Finish(es)	10-12, 20-33
Size	9.75" x 12" x 2.79" (247.65mm x 304.80mm x 70.74mm)
Weight	7.9lbs (3.58kg)
Hole Size	11/16" (17.46mm)
Recommended Hardware	1/2"-13 x 1" Taper Head Socket Cap Screw
Recommended Tools	Tool Kit 1 6 Hex Key Wrench Cluster - MT-TK-HX-00-0-SAE
For More Info	www.ModTruss.com



Electrical Hazard



Flammability



In Stock



Made To Order



Customizable



Reusable



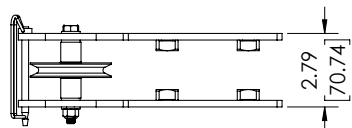
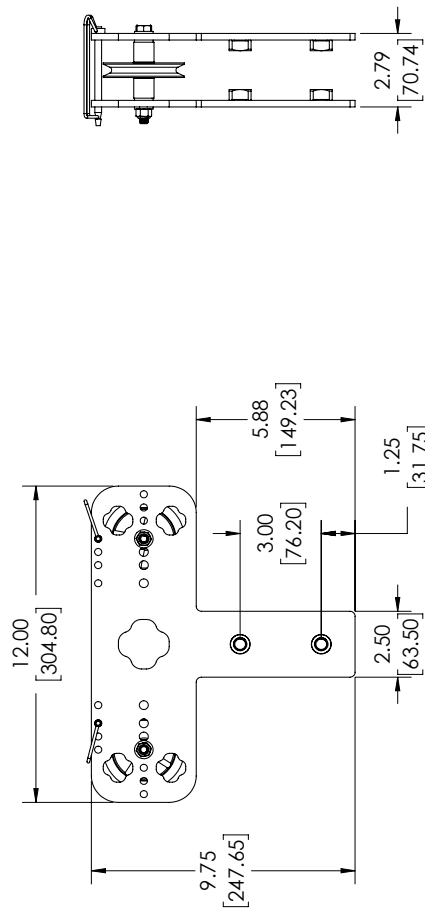
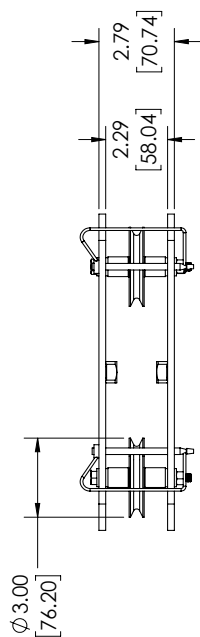
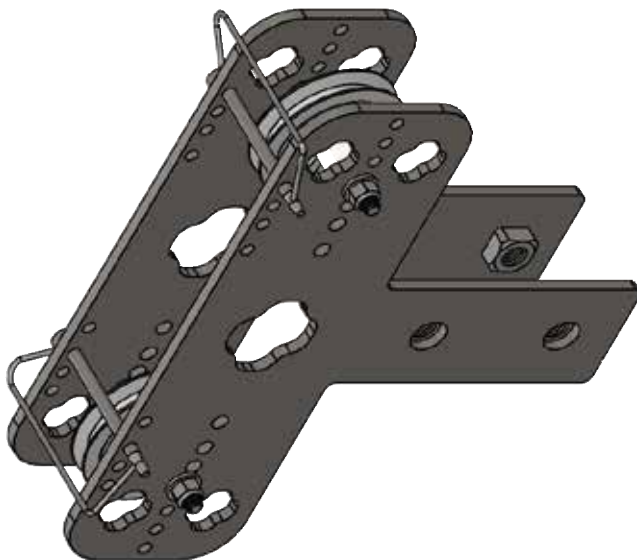
Compatible



Serialized & Traceable

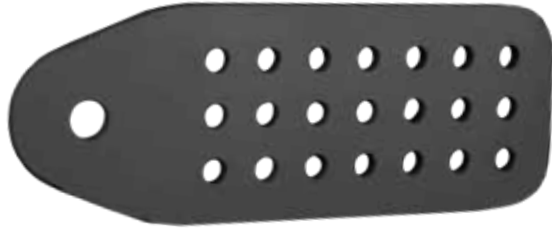
Series | **MR** Motion & Rigging

Product Number | MT-MR-HB-03



	REVISION LEVEL - MED. - 5 OF 11 ER BRACKET (1) DIMENSIONS ARE IN MM	REVISION: VI 9/10/2018
	DESCRIPTION: 3" HEAD BLOCK	
PART NUMBER: MT-MR-HB-03		

Steel Rigging Mounts



MT-MR-FLT-06-16-0050-0100



MT-MR-TEE-06-06-0350-0100



MT-MR-FLT-06-06-0050-0127

Standard Material	A36 Low Carbon Steel
Standard Finish	10 - Zinc Clear
Available Finish(es)	10-12, 20-33
Recommended Tools	Tool Kit 1
For More Info	www.ModTruss.com

Part # Description	Size	Weight	Hole Size	Recommended Hardware
MT-MR-TEE-06-06-0350-0100 <i>6" 3-Hole Slotted Rigging Mount</i>	6" x 6" x .50" (152.40mm x 152.40mm x 12.70mm)	6.85lbs (3.11kg)	11/16" (17.46mm)	5/8"-11 Thread Grade 8 Bolt 5/8" SAE Zinc-Plated Washer 5/8"-11 Thread, Grade 8 Hex Nut (M16 x 2 Thread, Class 10.9 Bolt M16, Class 10.9 Washer M16 x 2 Thread, Class 10.9 Nut)
MT-MR-FLT-06-16-0050-0100 <i>6" x 16" Shackle Rigging Plate</i>	16" x 6" x .50" (406.40mm x 152.40mm x 12.70mm)	10.8lbs (4.90kg)	11/16" (17.46mm) 1" (25.40mm)	5/8"-11 Thread Grade 8 Bolt 5/8" SAE Zinc-Plated Washer 5/8"-11 Thread, Grade 8 Hex Nut (M16 x 2 Thread, Class 10.9 Bolt M16, Class 10.9 Washer M16 x 2 Thread, Class 10.9 Nut)
MT-MR-FLT-06-06-0050-0127 <i>6" Countersunk Rigging Plate</i>	5.88" x 5.88" x .50" (149.23mm x 149.23mm x 12.70mm)	4.30lbs (1.95kg)	11/16" (17.46mm)	5/8"-11 Thread Grade 8 Bolt 5/8" SAE Zinc-Plated Washer 5/8"-11 Thread, Grade 8 Hex Nut (M16 x 2 Thread, Class 10.9 Bolt M16, Class 10.9 Washer M16 x 2 Thread, Class 10.9 Nut) MT-HW-NT-09-0109-128-0000-0000



Electrical Hazard



Flammability



In Stock



Made To Order



Customizable



Reusable



Compatible



Serialized & Traceable

TR

EX

PL

JH

PA

HG

MR

AC

HW

TK

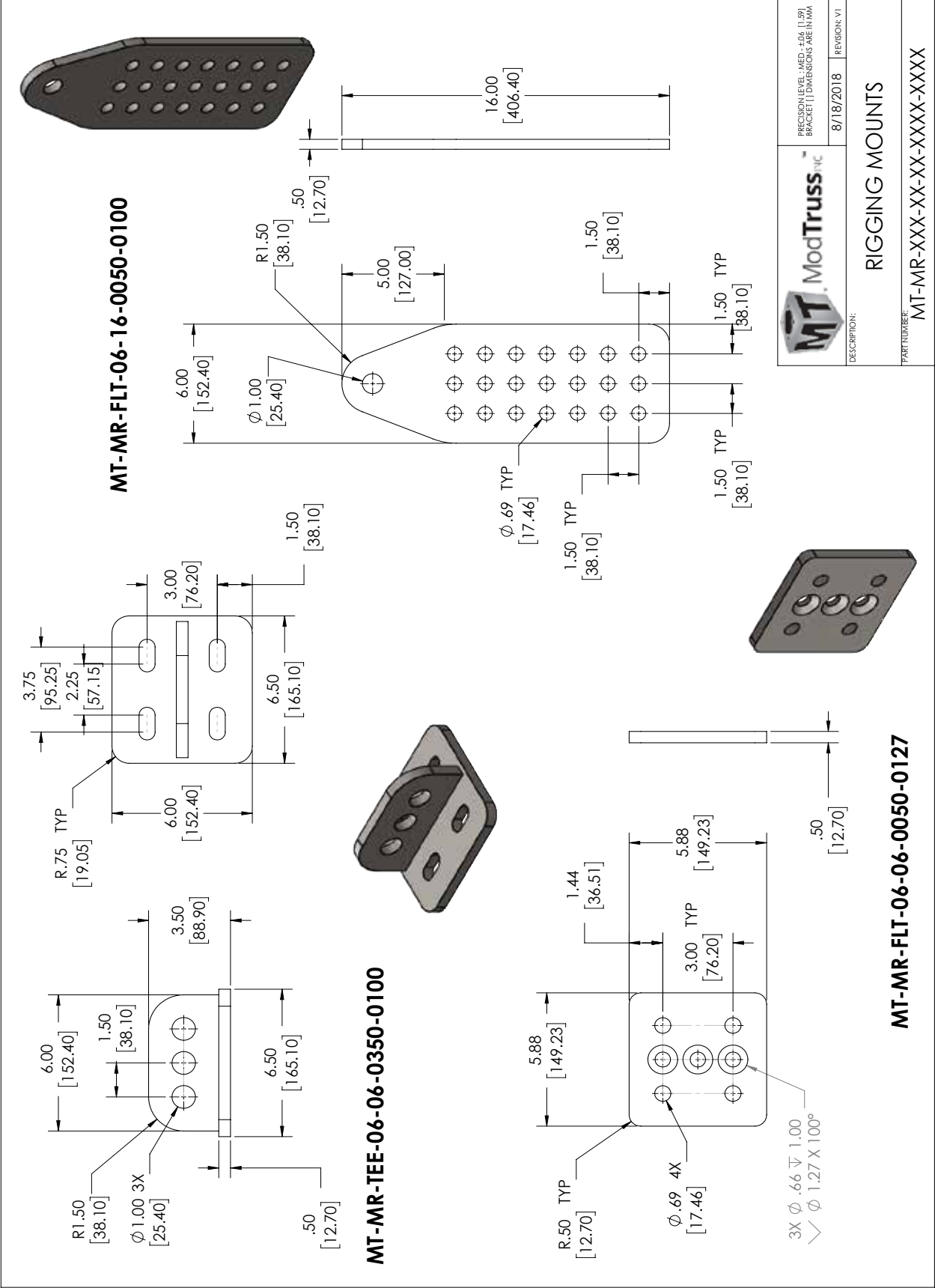
MH

FH

GL

Series | **MR Motion & Rigging**

Product Number | MT-MR-XXX-XX-XX-XXXX-XXXX



	PRECISION LEVEL: MED - ±0.04 [1.59] BRACKET () DIMENSIONS ARE IN MM
	8/18/2018 REVISION: VI
DESCRIPTION: RIGGING MOUNTS	
PART NUMBER: MT-MR-XXX-XX-XX-XXXX-XXXX	

Slotted Rigging 12" Plate

Part Number | MT-PL-A-TR-VW-1132-1132-090



Standard Material	A36 Low Carbon Steel
Standard Finish	10 - Zinc Clear
Available Finish(es)	10-12, 20-32
Size	11.5" x 11.5" x 0.50" (292.10mm x 292.10mm x 12.70mm)
Weight	16.95lbs (7.68kg)
Hole Size	11/16" (17.46mm)
Recommended Hardware	5/8"-11 Thread Grade 8 Bolt, 3" Long 5/8" SAE Zinc-Plated Washer 5/8"-11 Thread, Grade 8 Hex Nut (M18 x 2 Thread, 76mm Long, Class 10.9 Bolt M18, Class 10.9 Washer M18 x 2 Thread, Class 10.9 Nut)
Recommended Tools	ModTruss Tool Kit 1
Associated Products	12" TR ModTruss™ Series 5/8-11 Swivel Hoist Ring - Male MT-HW-BT-LHS-ALN-04-00-0109-128-0100 12" X 12" X 1/2" Aluminum Spacer Plate - MT-PL-E-12-12-0032-AL
For More Info	www.ModTruss.com



Electrical Hazard



Flammability



In Stock



Made To Order



Customizable



Reusable



Compatible



Serialized & Traceable

TR

EX

PL

JH

PA

HG

MR

AC

HW

TK

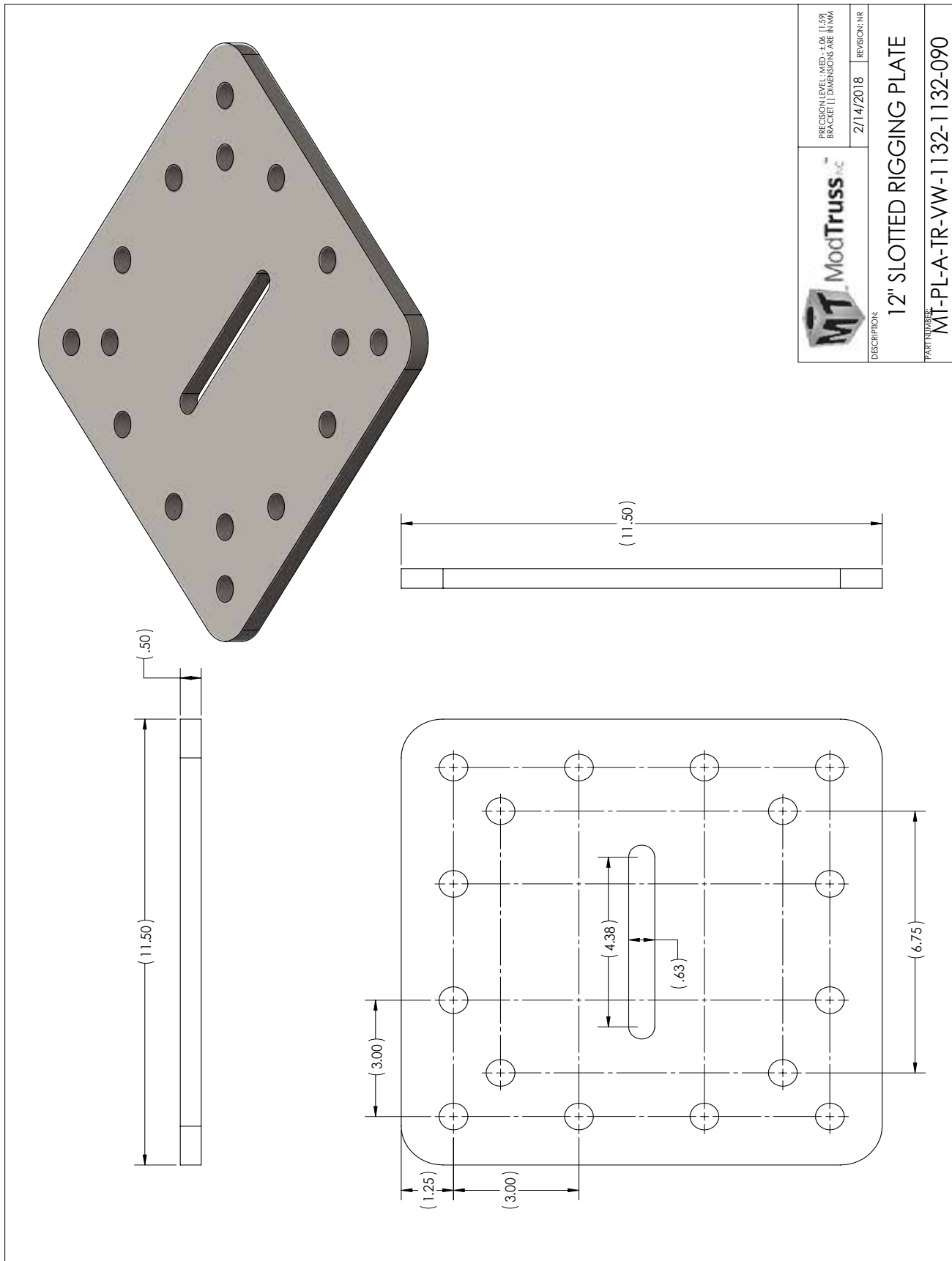
MH

FH

GL

Series | **MR** Motion & Rigging

Product Number | MT-PL-A-TR-VW-1132-1132-090



	PRECISION LEVEL: MED- BRACKET (1 DIMENSIONS ARE IN MM)
	2/14/2018 REVISION: NR
DISCRIPTION: 12" SLOTTED RIGGING PLATE	
PART NUMBER: MT-PL-A-TR-VW-1132-1132-090	

Flip Down Caster

Part Number | MT-MR-CM-1202-08



Standard Material	A36 Low Carbon Steel
Standard Finish	28 - Gloss Yellow
Available Finish(es)	10-12, 20-33
Size	12.75" x 14.75" x 7.50" (323.85mm x 374.65mm x 190.50mm)
Weight	18.30lbs (8.300kg)* *Weight for Caster plate - doesn't include caster
Hole Size	11/16" (17.46mm)
Recommended Hardware	5/8"-11 Thread Grade 8 Bolt, 2" Long 5/8" SAE Zinc-Plated Washer 5/8"-11 Thread, Grade 8 Hex Nut (M16 x 2 Thread, 50mm Long, Class 10.9 Bolt M16, Class 10.9 Washer M16 x 2 Thread, Class 10.9 Nut)
Recommended Tools	Tool Kit 1
For More Info	www.ModTruss.com



Electrical Hazard



Flammability



In Stock



Made To Order



Customizable



Reusable



Compatible



Serialized & Traceable

TR

EX

PL

JH

PA

HG

MR

AC

HW

TK

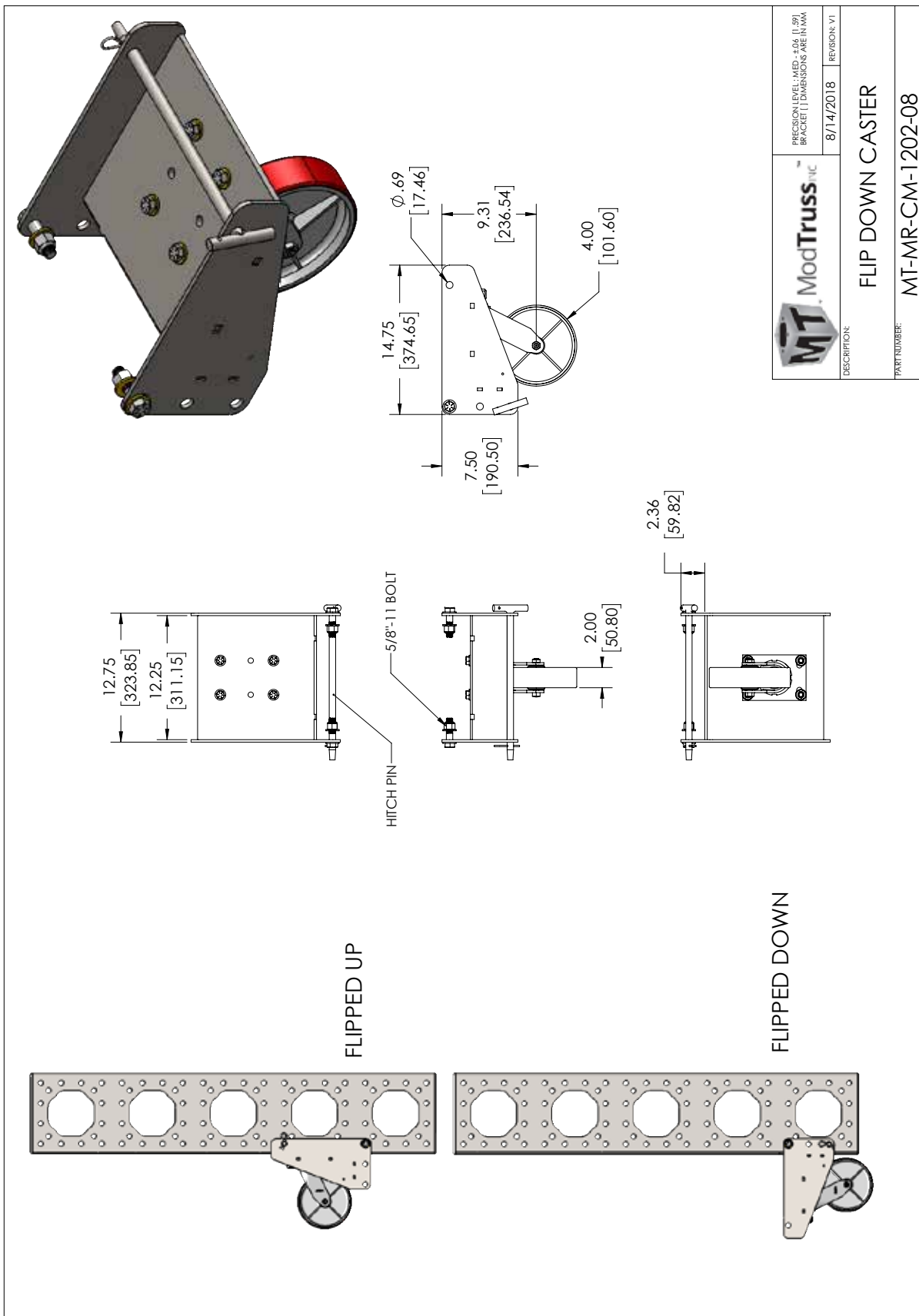
MH

FH

GL

Series | **MR** Motion & Rigging

Product Number | MT-MR-CM-1202-08



Heavy Duty Caster with Internal Jack

Part Number | MT-MR-CM-CW-1950-1500-AS

Wheel Load Capacity 16,000lbs

Jack Load Capacity 12,000lbs



Standard Material	A36 Low Carbon Steel
Standard Finish	28 - Gloss Yellow
Available Finish(es)	10-12, 20-33
Size	19.50" x 19.50" x 30.0" (495.30mm x 495.30mm x 762.00mm)
Weight	351lbs (159.21kg)* *Not Certified
Hole Size	11/16" (17.46mm)
Recommended Hardware	5/8"-11 Thread Grade 8 Bolt, 2" Long 5/8" SAE Zinc-Plated Washer 5/8"-11 Thread, Grade 8 Hex Nut (M16 x 2 Thread, 50mm Long, Class 10.9 Bolt M16, Class 10.9 Washer M16 x 2 Thread, Class 10.9 Nut)
Recommended Tools	Tool Kit 1
For More Info	www.ModTruss.com



Electrical Hazard



Flammability



In Stock



Made To Order



Customizable



Reusable



Compatible



Serialized & Traceable

TR

EX

PL

JH

PA

HG

MR

AC

HW

TK

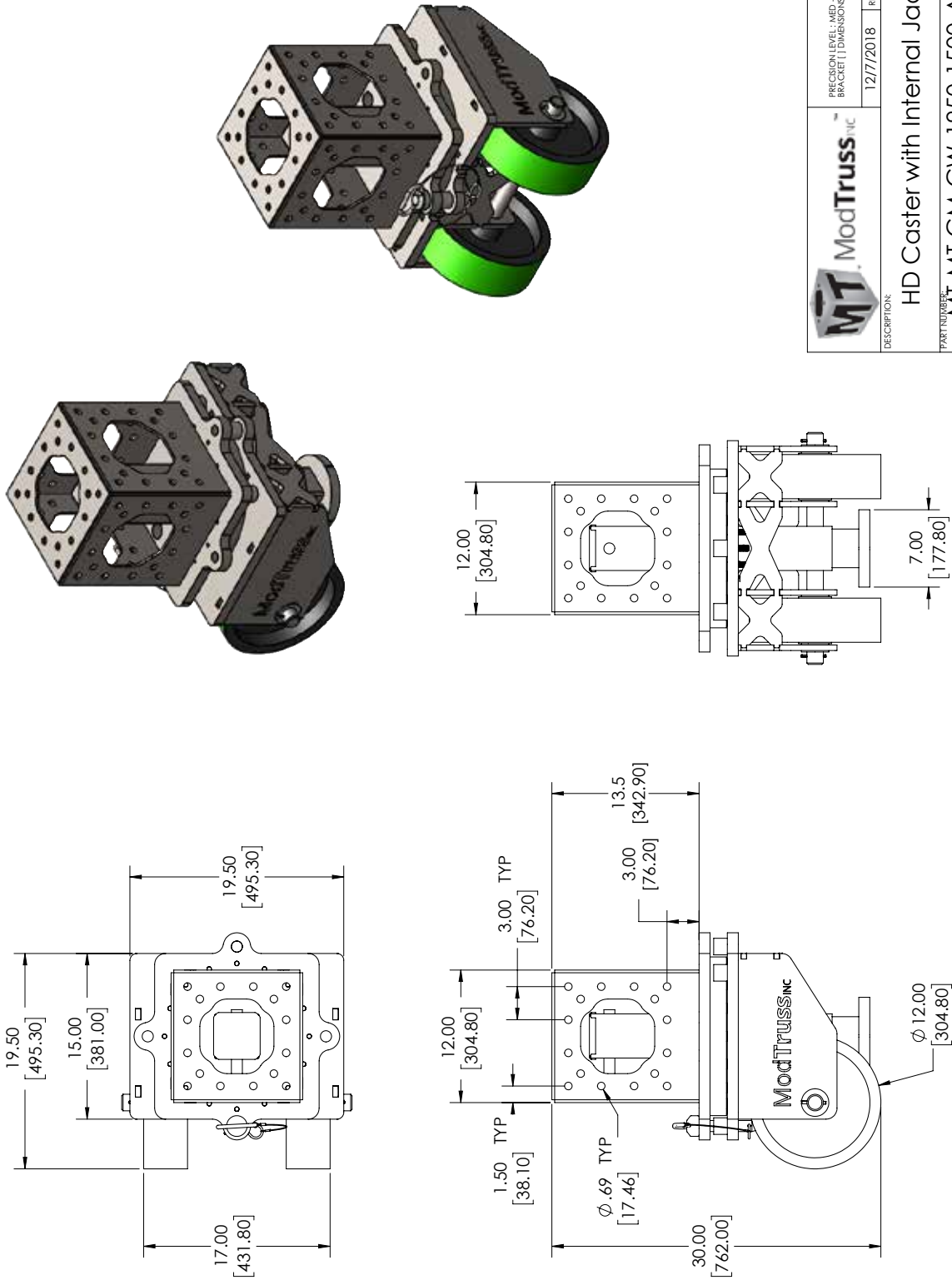
MH

FH

GL

Series | **MR** Motion & Rigging

Product Number | MT-MR-CM-CW-1950-1500-AS



	PRECISION LEVEL, MADE IN USA BRACKET DIMENSIONS ARE IN MM	12/7/2018	REVISION: VI
	DESCRIPTION: HD Caster with Internal Jack PART NUMBER: MT-MT-CM-CW-1950-1500-AS		

3" Mini Tower Base

Part Number | MT-MR-03-03-TW-WN-5600-5600-036



Standard Material	A36 Low Carbon Steel
Standard Finish	20 - Black
Available Finish(es)	N/A
Size	N/A - Components are multi-configurable
Weight	130lbs (61.24kg)* Weight May Vary
Hole Size	11/16" (17.46mm)
Recommended Hardware	5/8"-11 Thread Grade 8 Bolt, 2.5" Long 5/8" SAE Zinc-Plated Washer 5/8"-11 Thread, Grade 8 Hex Nut (M16 x 2 Thread, 64mm Long, Class 10.9 Bolt M16, Class 10.9 Washer M16 x 2 Thread, Class 10.9 Nut)
Recommended Tools	Tool Kit 1
Associated Products	MT-MR-SL-06-12-03
For More Info	www.ModTruss.com

TR

EX

PL

JH

PA

HG

MR

AC

HW

TK

MH

FH

GL



Electrical Hazard



Flammability



In Stock



Made To Order



Customizable



Reusable



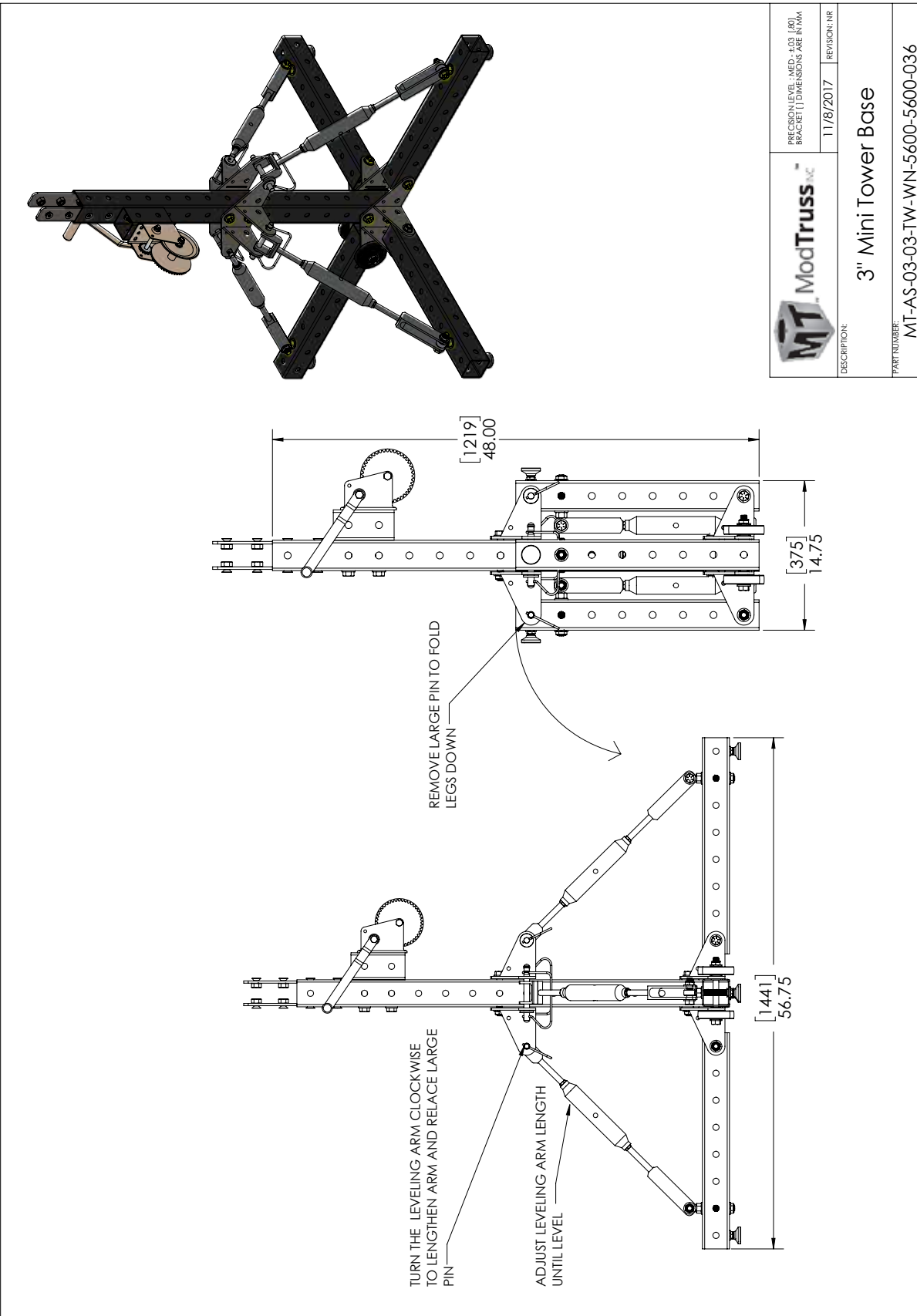
Compatible



Serialized & Traceable

Series | **MR** Motion & Rigging

Product Number | MT-MR-03-03-TW-WN-5600-5600-036



	PRECISION LEVEL - MED - 403 (80) BRACKET (1) DIMENSIONS ARE IN MM	11/8/2017	REVISION: NR
	DESCRIPTION:	3" Mini Tower Base	
PART NUMBER:		MT-AS-03-03-TW-WN-5600-5600-036	

Internal Jack

Part Number | MT-MR-JA-8K-2400-0300-0250



Internal Jack Mounting Plate

Part Number | MT-MR-JA-PL-1150-0350-0425



Standard Material	A36 Low Carbon Steel
Standard Finish	10 - Zinc Clear
Available Finish(es)	10-12, 20-33
Size	3.5" x 4.25" x 11.41" (88.90mm x 107.95mm x 289.72mm)
Weight	4.95lbs (2.25kg)
Hole Size	11/16" (17.46mm)
Recommended Hardware	5/8"-11 Thread Grade 8 Bolt, 2" Long 5/8" SAE Zinc-Plated Washer 5/8"-11 Thread, Grade 8 Hex Nut (M16 x 2 Thread, 50mm Long, Class 10.9 Bolt M16, Class 10.9 Washer M16 x 2 Thread, Class 10.9 Nut)
Recommended Tools	Tool Kit 1
For More Info	www.ModTruss.com



Standard Material	A36 Low Carbon Steel
Standard Finish	81 - Spray Semi Gloss Black
Available Finish(es)	80-86
Size	2.88" x 22.38" x 2.88" (73.03mm x 568.33mm x 73.03mm)
Weight	23.35lbs (10.59kg)
Hole Size	5/8"-11 Weld Nut
Recommended Hardware	5/8"-11 Thread Grade 8 Bolt, 2" Long 5/8" SAE Zinc-Plated Washer 5/8"-11 Thread, Grade 8 Hex Nut (M16 x 2 Thread, 50mm Long, Class 10.9 Bolt M16, Class 10.9 Washer M16 x 2 Thread, Class 10.9 Nut)
Recommended Tools	Tool Kit 1
For More Info	www.ModTruss.com



TR

EX

PL

JH

PA

HG

MR

AC

HW

TK

MH

FH

GL

Series | **MR** Motion & Rigging

Product Number | MT-MR-JA-XX-XXXX-XXXX-XXXX



MT-MR-JA-8K-2400-0300-0250

MT-MR-JA-PL-1150-0350-0425

	PRECISION LEVEL: MED. ±.06 [1.57] BRACKET (1) DIMENSIONS ARE IN MM
REVISION: VI	9/11/2018
DESCRIPTION: JACK AND INTERNAL MOUNTING PLATE	
PART NUMBER: MT-MR-JA-XX-XXXX-XXXX-XXXX	